

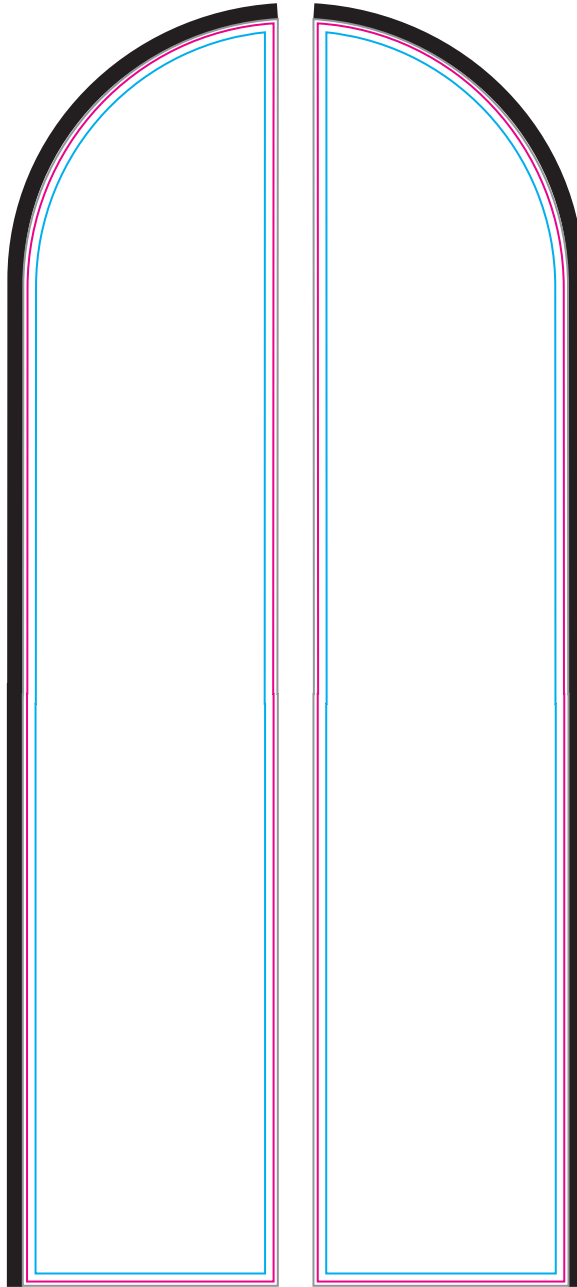
PO#:

ARTWORK APPROVAL SHEET

Imprint Colors:

NYLON POCKET
FOR POLE →

← NYLON POCKET
FOR POLE



BLEED AREA - 30"W x 149"H
NOT VISIBLE WHEN DISPLAYED

FINISHED AREA - 29"W x 148"H
VISIBLE WHEN DISPLAYED

SAFE AREA - 27"W x 146"H
KEEP IMPORTANT TEXT/LOGO WITHIN THIS AREA

NOTE: Sublimated products with light or white coloured designs may have imperfections, therefore we recommend dark coloured designs to avoid this.

All images must be embedded. All fonts must be outlined

Imprint Size: _____ Imprint Location: EDGE TO EDGE Decoration Type: SUBLIMATION

Product Code: SU752-6 Product Color: SEE ABOVE Quantity: _____

Due to the technical aspects of Screen Printing, Embroidery, Sublimation, Heat Transfer & Laser Engraving Processes, we will do our best to match your requested imprint colour and fine art details as close as possible, but cannot guarantee a 100% perfect match. The visibility and clarity of very small text/graphic elements cannot be guaranteed due to the nature of the product's textured surface and under the normal limitations of decoration. If client submitted DST/EMB files are being used, we will not be able to guarantee the embroidery results. For Full Bleed Sublimation orders there may be a small percentage of print imperfections.

First proof is at no charge. Additional proofs will be at a cost of \$12.50 (g). If artwork needs to be touched up, reconstructed, or manipulated in any way, artwork charges will apply at \$50 (g) per hour. Minimum 1 hour. These charges will be acknowledged before proceeding with the order.