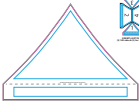


Imprint Colors:



IMPRINTS, APPROVALS  
AND NOTES ONLY

**PRODUCT CODE - 1000000000**

DATE: 10/10/2023

**TENT KIT APPROVALS - APPROVALS**

DATE: 10/10/2023

**TENT KIT APPROVALS - APPROVALS**

DATE: 10/10/2023

**TENT KIT**

Approval must be provided in black and in color

Imprint Size: \_\_\_\_\_ Imprint Location: \_\_\_\_\_ Generation Type: \_\_\_\_\_

Product Code: **1000000000** Product Color: \_\_\_\_\_ Quantity: \_\_\_\_\_

This is the artwork approval sheet for the tent kit. It is used to confirm that the tent kit meets the requirements of the tent kit. It is used to confirm that the tent kit meets the requirements of the tent kit. It is used to confirm that the tent kit meets the requirements of the tent kit.

The tent kit includes all the tent kit components and the tent kit components. The tent kit includes all the tent kit components and the tent kit components. The tent kit includes all the tent kit components and the tent kit components.

The tent kit includes all the tent kit components and the tent kit components. The tent kit includes all the tent kit components and the tent kit components. The tent kit includes all the tent kit components and the tent kit components.



---

 Imprint Colors:

## FRONT



**BLACK AREA - IMPRINT COLOR**  
 NOT COLOR REPRESENTATIVE

**PINKISH AREA - IMPRINT COLOR**  
 COLOR REPRESENTATIVE

**BLUE AREA - IMPRINT COLOR**  
 NOT COLOR REPRESENTATIVE

**SINGLE SIDED BACKWALL**

*Always use backwall to indicate that the artwork*

Imprint Size: \_\_\_\_\_ Imprint Location: \_\_\_\_\_ Generation Type: \_\_\_\_\_

Product Code: **0278-11** Product Color: \_\_\_\_\_ Quantity: \_\_\_\_\_

---

The technical department of Solitronic and their Supplier, are not responsible to assist you regarding imprint color and the artwork accuracy responsible for your production - **WE** protect yours.

On additional orders, there will be a charge to help placement with artwork print registration. These registration marks and features will be added to your artwork.

The validity and clarity of any and all graphics submitted to us must be 100% right. There is no fee guarantee for us to correct the product if it is not approved under the registration of our business.

Imprint Colors:



REGISTRATION - TOP ONLY (0.010)

CONTOURING - TOP & BOTTOM (0.010)

HALF SIDE WALL - TOP & BOTTOM (0.010)

**SINGLE SIDED HALF SIDEWALL**

*(Always use top/bottom & bottom for the bottom)*

Imprint Size: \_\_\_\_\_ Imprint Location: \_\_\_\_\_ Registration Type: \_\_\_\_\_

Product Code: 5078-11 Product Color: \_\_\_\_\_ Quantity: \_\_\_\_\_

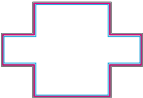
Use the bottom margin of this sheet as your master; we will do our best to meet your requested imprint size and the artwork is only as good as your preparation. **DO NOT SCALE**

For additional orders, there will be a charge to help placement with overnight print capabilities. Your registration, product and quantity will be used as a guide.

The quality and clarity of any and all graphics depends on where you place the right, how clean the graphics are to allow the printer to reproduce them and when the artwork is submitted.



Imprint Colors:

**EMERALD CROSS TABLECLOTH**  
Emerald Cross Tablecloth, 60" x 60", 100% Polyester**EMERALD CROSS - 60" x 60" TABLECLOTH**  
Emerald Cross Tablecloth**EMERALD CROSS TABLECLOTH**  
Emerald Cross Tablecloth**BOX FIT TABLECLOTH**

\*Always use the correct box fit for the correct

Imprint Size: \_\_\_\_\_ Imprint Location: \_\_\_\_\_ Orientation Type: \_\_\_\_\_

Product Code: **EMERD** Product Color: \_\_\_\_\_ Quantity: \_\_\_\_\_

As the authorized agent of Sublimation Solutions, we will do our best to meet your requested imprint size and the artwork is ready to print. Sublimation Solutions - 800-368-3333

For additional orders, there will be a charge to help process your order and processing/print registration. Your registration, proofs and artwork will be sent to you.

The quality and clarity of any and all graphics depends on image source (i.e. digital), how clean the garment fabric is and the product's inherent tolerance under the normal production circumstances.