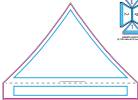


Imprint Colors:



REGIONS - APPROVALS
 ALL OTHERS ARE OK

REGIONS - APPROVALS

REGIONS - APPROVALS

REGIONS - APPROVALS

TENT KIT

Always use the correct kit items that the artist

Imprint Size: _____ Imprint Location: _____ Generation Type: _____

Product Code: 1000-15 Product Color: _____ Quantity: _____

The customer is responsible for providing the correct location and size of the imprint on the tent. The customer is responsible for providing the correct location and size of the imprint on the tent.

The customer is responsible for providing the correct location and size of the imprint on the tent. The customer is responsible for providing the correct location and size of the imprint on the tent.

The customer is responsible for providing the correct location and size of the imprint on the tent. The customer is responsible for providing the correct location and size of the imprint on the tent.

Imprint Colors:



IMPRINT COLOR - TOP PRINT COLOR
 All dimensions in millimeters

IMPRINT COLOR - BOTTOM PRINT COLOR
 All dimensions in millimeters

TOP AND BOTTOM PRINT COLOR
 All dimensions in millimeters

TOP AND BOTTOM PRINT COLOR
 All dimensions in millimeters

TENT KIT

All dimensions in millimeters. All dimensions are in millimeters.

Imprint Size: _____ Imprint Location: _____ Generation Type: _____

Product Code: 5078-15 Product Color: _____ Quantity: _____

This is the artwork approval sheet for the PCB. It is used to check the artwork, print specifications, and the net list for the PCB. It is used to check the artwork, print specifications, and the net list for the PCB. It is used to check the artwork, print specifications, and the net list for the PCB.

The artwork approval sheet is used to check the artwork, print specifications, and the net list for the PCB. It is used to check the artwork, print specifications, and the net list for the PCB. It is used to check the artwork, print specifications, and the net list for the PCB.

The artwork approval sheet is used to check the artwork, print specifications, and the net list for the PCB. It is used to check the artwork, print specifications, and the net list for the PCB. It is used to check the artwork, print specifications, and the net list for the PCB.

 Imprint Colors:

FRONT



BLACK AREA - WHITE COLOR
 NOT COLOR REPRODUCIBLE

PINKISH AREA - WHITE COLOR
 COLOR REPRODUCIBLE

BLUE AREA - WHITE COLOR
 NOT COLOR REPRODUCIBLE

SINGLE SIDED BACKWALL

Always use backwall to define the surface

Imprint Size: _____ Imprint Location: _____ Generation Type: _____

Product Code: **5078-15** Product Color: _____ Quantity: _____

The technical department of Solimex and their branches are not responsible to verify your requested imprint color and the color reproduction is only responsible for what's provided - 50% perfect color

For additional orders, there will be a charge to help placement with additional print registration. These registration marks and numbers will be visible on the artwork.

The validity and clarity of any and all graphics submitted to us must be 100% right. There is no guarantee that we will correct the product if it is not approved under the manufacturing conditions.

 Imprint Colors:

 BLACK/BLACK, 100% PIGMENT WHITE
 (All colors are standard)

 PINK/BLACK, 100% PIGMENT WHITE
 (All colors are standard)

 BLUE/BLACK, 100% PIGMENT WHITE
 (All colors are standard)

SINGLE SIDED HALF SIDEWALL

(Always use the standard PCB size for the artwork)

Imprint Size: _____ Imprint Location: _____ Generation Type: _____

 Product Code: 5078-15 Product Color: _____ Quantity: _____

 The PCB manufacturer and substrate supplier warrant that all artwork is used per required imprint size and the substrate is ready to receive the artwork per their standard process.

The substrate color, size and tolerance is subject to change without notice. The manufacturer and substrate supplier warrant that all artwork is used per required imprint size and the substrate is ready to receive the artwork per their standard process.

The artwork will be printed only on the specified substrate unless otherwise noted. The manufacturer and substrate supplier warrant that all artwork is used per required imprint size and the substrate is ready to receive the artwork per their standard process.

 Imprint Colors:

 BLACK/BLACK, 100% PIGMENT WHITE
 (All colors are standard)

 PINK/BLACK, 100% PIGMENT WHITE
 (All colors are standard)

 BLUE/BLACK, 100% PIGMENT WHITE
 (All colors are standard)

SINGLE SIDED HALF SIDEWALL

(Always use the standard 1.6mm board thickness)

Imprint Size: _____ Imprint Location: _____ Generation Type: _____

 Product Code: 50750-15 Product Color: _____ Quantity: _____

 Please be advised that the use of standard color ink on standard substrates is not guaranteed. We will do our best to match your requested imprint colors and the actual colors may vary slightly. For more information, please contact us at 800-368-5888.

For additional colors, there will be charges to help process extra work and expedite your shipment. These requirements include lead times, additional cost charges, etc.

The quality and clarity of any and all graphics depends on image source (i.e. digital), how closely the provided details to submit the product information followed under the standard business conditions.