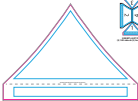


Imprint Colors:



REGIONS - COMMENTS  
 ALL OTHERS ARE OK

REGIONS - COMMENTS

REGIONS - COMMENTS

REGIONS - COMMENTS

**TENT CUT**

Always use tent cut to ensure that the entire

Imprint Size: \_\_\_\_\_ Imprint Location: \_\_\_\_\_ Generation Type: \_\_\_\_\_

Product Code: 5075-10 Product Color: \_\_\_\_\_ Quantity: \_\_\_\_\_

The technical support of customer service team will ensure that the entire year's production is correct and the entire order is ready to ship. For more details, please contact your account manager.

We understand that you will be satisfied with the quality of your production. Please contact us if you have any questions or concerns.

The quality of your production is our top priority. We will ensure that the entire year's production is correct and the entire order is ready to ship. For more details, please contact your account manager.

Imprint Colors:



**REGULATED - 100% (100% COMPLIANCE)**  
 (100% COMPLIANCE)

**RESTRICTED - 100% (100% COMPLIANCE)**  
 (100% COMPLIANCE)

**TOP SIDE (PROCESSED) - 100% (100% COMPLIANCE)**  
 (100% COMPLIANCE)

**TOP SIDE (UNPROCESSED) - 100% (100% COMPLIANCE)**  
 (100% COMPLIANCE)

**TENTED PAD**

*Always read the instructions on the back of the product.*

Imprint Size: \_\_\_\_\_ Imprint Location: \_\_\_\_\_ Generation Type: \_\_\_\_\_

Product Code: **100% (100% COMPLIANCE)** Product Color: \_\_\_\_\_ Quantity: \_\_\_\_\_

This is the artwork approval sheet for the product. It is used to ensure that the artwork meets the requirements of the product and is suitable for production. It is not intended to be used as a substitute for the product's technical specifications.

The artwork is subject to change without notice. The manufacturer is not responsible for any errors or omissions in the artwork. The manufacturer is not responsible for any damage to the product or the artwork.

The artwork is subject to change without notice. The manufacturer is not responsible for any errors or omissions in the artwork. The manufacturer is not responsible for any damage to the product or the artwork.

Imprint Colors:

FRONT



**BLACK AREA - IMPRINT COLOR**  
 NOT visible when assembled

**RED AREA - IMPRINT COLOR**  
 NOT visible when assembled

**BLUE AREA - IMPRINT COLOR**  
 NOT visible when assembled

**SINGLE SIDED BACKMILL**

Backmill that backmills 1 or both sides of the substrate

Imprint Size: \_\_\_\_\_, Imprint Location: \_\_\_\_\_, Generation Type: \_\_\_\_\_

Product Code: **5075-10**, Product Color: \_\_\_\_\_, Quantity: \_\_\_\_\_

This is the responsibility of Substrate and their Supplier, we will do our best to assist you regarding imprint color and the artwork accordingly, responsible for correct generation - PCB product color

For substrate color, there will be colors to help placement with color management/print registration. These registration marks and their color will be visible when assembled.

The validity, we state, of any and all graphics submitted to us, is subject to our right, to use them for the purpose of our to submit the product information to our client under the confidentiality of information.

Imprint Colors:



REGISTRATION - TOP/LEFT ONLY  
 (SEE 00000000000000000000)

CONTOUR/AREA - TOP & LEFT ONLY  
 (SEE 00000000000000000000)

MARKS ONLY - TOP & LEFT ONLY  
 (SEE 00000000000000000000)

**SINGLE SIDED HALF SIDEWALL**

*(Always use top/bottom & left/right for the bottom)*

Imprint Size: \_\_\_\_\_ Imprint Location: \_\_\_\_\_ Registration Type: \_\_\_\_\_

Product Code: 5075-10 Product Color: \_\_\_\_\_ Quantity: \_\_\_\_\_

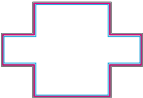
Use the bottom registration of substrate and/or boards, we will do our best to meet your requested imprint size and the substrate may vary slightly, but we will guarantee 100% perfect color.

For substrate color, there will be colors to help placement with alignment/print registration. These registration marks and lines are yellow and not for printing.

The quality we strive for may not always be possible to achieve. We will do our best to meet your requested imprint size and the substrate may vary slightly, but we will guarantee 100% perfect color and the product will be printed under the most favorable circumstances.



Imprint Colors:



**EMERALD GREEN - 100% CMYK**  
 CMYK: 00, 100, 0, 0

**PURPLE - 50% CMYK**  
 CMYK: 0, 0, 100, 50

**SKY BLUE - 100% CMYK**  
 CMYK: 0, 0, 100, 0

**BOX FIT TABLECLOTH**

*Always use the correct color when printing on fabric.*

Imprint Size: \_\_\_\_\_ Imprint Location: \_\_\_\_\_ Orientation Type: \_\_\_\_\_

Product Code: **5075-10** Product Color: \_\_\_\_\_ Quantity: \_\_\_\_\_

Due to the inherent nature of fabric and the transfer, we will do our best to meet your requested imprint color and the actual color may vary slightly from what is shown. We prefer color.

For additional orders, there will be a charge to help placement with each subsequent print application. This charge includes product and handling, with no extra cost.

The quality and clarity of any and all graphics depends on image source (i.e. digital), how clean the garment fabric is when the product is produced and how well the overall production is maintained.