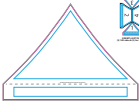


Imprint Colors:



REGIONS - COMMENTS
 ALL OTHERS ARE OK

REGIONS - COMMENTS
 ALL OTHERS ARE OK

REGIONS - COMMENTS
 ALL OTHERS ARE OK

REGIONS - COMMENTS
 ALL OTHERS ARE OK

TENT CUT

Always cut horizontally, always start the bottom

Imprint Size: _____ Imprint Location: _____ Generation Type: _____

Product Code: 5075-25 Product Color: _____ Quantity: _____

The technical department of the manufacturer hereby certifies that the goods are in conformity with the technical specifications and the quality standards of the manufacturer, but does not guarantee the quality of the goods.

The customer orders the goods in conformity with the technical specifications and the quality standards of the manufacturer. The customer hereby certifies that the goods are in conformity with the technical specifications and the quality standards of the manufacturer.

The customer, on behalf of the manufacturer, certifies that the goods are in conformity with the technical specifications and the quality standards of the manufacturer, but does not guarantee the quality of the goods.

Imprint Colors:



1: 100% (100% of the surface)
2: 100% (100% of the surface)



100% (100%) - 100% (100%)
100% (100%) - 100% (100%)

100% (100%) - 100% (100%)
100% (100%) - 100% (100%)

100% (100%) - 100% (100%)
100% (100%) - 100% (100%)

100% (100%) - 100% (100%)
100% (100%) - 100% (100%)

TENT KIT

100% (100%) - 100% (100%)
100% (100%) - 100% (100%)

Imprint Size: _____ Imprint Location: _____ Generation Type: _____

Product Code: 8078-25 Product Color: _____ Quantity: _____

This is the artwork approval sheet for the artwork. It is used to confirm that the artwork meets the requirements of the artwork approval process and that the artwork is ready for production. It is not a contract and does not constitute an offer.

The artwork is the property of the customer. It is not to be used for any other purpose without the express written consent of the customer. The customer is responsible for the accuracy of the artwork and for the results of the artwork approval process.

The artwork is the property of the customer. It is not to be used for any other purpose without the express written consent of the customer. The customer is responsible for the accuracy of the artwork and for the results of the artwork approval process.

PO#: _____

ARTWORK APPROVAL SHEET

Imprint Colors: _____



FRONT PANEL - FRONT VIEW
ARTWORK APPROVAL SHEET

FRONT PANEL - FRONT VIEW
ARTWORK APPROVAL SHEET

BACK PANEL - FRONT VIEW
ARTWORK APPROVAL SHEET

SINGLE SIDED BACKWALL

Always use back wall art to face the cabinet

Imprint Size: _____ Imprint Location: _____ Generation Type: _____

Product Code: **5075-25** Product Color: _____ Quantity: _____

As the authorized agent of Sublimation Solutions, we will do our best to meet your requested imprint colors and the artwork meeting applicable technical parameters. We warrant this.

Our substrate colors may differ from the colors in digital proof and may vary with manufacturing/print variations. These specifications, products and finishes, subject to our standard terms.

The ability to print on any and all graphics depends on various factors like light, time, color, the garment fabric to which the product is attached and how well the garment is maintained.

PO#: _____

ARTWORK APPROVAL SHEET

Imprint Colors: _____



STANDARD WALL, 100% VISIBLE
SEE WALL INFORMATION PAGE

STANDARD WALL, 75% VISIBLE
SEE WALL INFORMATION PAGE

STANDARD WALL, 50% VISIBLE
SEE WALL INFORMATION PAGE

SINGLE SIDED BACKWALL

Always use backdrops & screens that fit cabinet

Imprint Size: _____ Imprint Location: _____ Generation Type: _____

Product Code: **5075-25** Product Color: _____ Quantity: _____

Use this form to request a full-size wall for review. We will do our best to meet your requested imprint size and the artwork is only responsible for what is provided. **NO** perfect prints.

For additional orders, there will be a charge to help placement with artwork print registration. This registration is needed and therefore, additional cost applies.

The ability to print on any wall height depends on where the wall is. Right, here is the guarantee for us to print the product information on wall under the wall structure situation.

 Imp rint Colors:

 BLACK/BLACK, 100% PIGMENT
 40% TRANSLUCENT

 PINK/BLACK, 100% PIGMENT
 40% TRANSLUCENT

 BLUE/BLACK, 100% PIGMENT
 40% TRANSLUCENT

SINGLE SIDED HALF SIDEWALL

*Always use the correct PCB file for the correct

Imp rint Size: _____ Imp rint Location: _____ Generation Type: _____

 Product Code: 5075-25 Product Color: _____ Quantity: _____

 Please be advised that all artwork submitted to us will be printed to match your requested imp rint color and the actual color may vary slightly from what you see on the screen.

We will be happy to help you with any questions you may have regarding your imp rint specifications. Thank you for choosing our products and services.

The quality and clarity of any and all graphics submitted to us will be checked to ensure that they are printed to match the requested color and that they are printed to match the requested quantity.

 Imp rint Colors:

 BLACK/BLACK, 100% PIGMENT BLACK
 (40% cyan/60% magenta)

 CYAN/CYAN, 100% PIGMENT CYAN
 (100% cyan/0% magenta)

 MAGENTA/MAGENTA, 100% PIGMENT
 (0% cyan/100% magenta)

SINGLE SIDED HALF SIDEWALL

(Always use the smallest 1.25mm drill for the pattern)

Imp rint Size: _____ Imp rint Location: _____ Generation Type: _____

 Product Code: 5078-25 Product Color: _____ Quantity: _____

 Please be advised that the use of additional colors for the artwork will be subject to a cost per square inch (CPSI) charge. The CPSI charge is dependent on the quantity of the artwork and the complexity of the artwork.

The artwork must be submitted in a digital format with all necessary files and a print-ready PDF file. The artwork must be submitted in a format that is compatible with the PCB manufacturing process.

The artwork must be submitted in a digital format with all necessary files and a print-ready PDF file. The artwork must be submitted in a format that is compatible with the PCB manufacturing process.