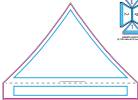


Imprint Location:



REGIONS - COMMENTS  
 ALL RIGHTS RESERVED

REGIONS - COMMENTS  
 ALL RIGHTS RESERVED

REGIONS - COMMENTS - COMMENTS  
 ALL RIGHTS RESERVED

REGIONS - COMMENTS - COMMENTS  
 ALL RIGHTS RESERVED

TENT CUT

Always cut horizontally, always start the cut on the left.

Imprint Size: \_\_\_\_\_ Imprint Location: \_\_\_\_\_ Generation Type: \_\_\_\_\_

Product Code: 10750-20 Product Color: \_\_\_\_\_ Quantity: \_\_\_\_\_

By submitting artwork to us, you warrant that you own all rights in the artwork and that you have the right to use the artwork in the manner intended. We warrant that we will use the artwork in the manner intended and that we will not use the artwork in any other manner.

We warrant that we will use the artwork in the manner intended and that we will not use the artwork in any other manner. We warrant that we will use the artwork in the manner intended and that we will not use the artwork in any other manner.

The validity of this warranty is void if the artwork is altered in any way. If you alter the artwork in any way, you warrant that you will use the artwork in the manner intended and that we will not use the artwork in any other manner.

Imprint Colors:



1: 100% (100% of the surface)  
2: 100% (100% of the surface)



100% (100%) - 100% (100%)  
100% (100%) - 100% (100%)

100% (100%) - 100% (100%)  
100% (100%) - 100% (100%)

100% (100%) - 100% (100%)  
100% (100%) - 100% (100%)

100% (100%) - 100% (100%)  
100% (100%) - 100% (100%)

TENT KUT

100% (100%) - 100% (100%)  
100% (100%) - 100% (100%)

Imprint Size: \_\_\_\_\_ Imprint Location: \_\_\_\_\_ Generation Type: \_\_\_\_\_

Product Code: 1000-10 Product Color: \_\_\_\_\_ Quantity: \_\_\_\_\_

For the full terms and conditions of the artwork approval process, see all documents in the "Product Approval" folder on the PCBnet website.

For artwork orders, there will be a review to help prevent errors and avoid reprinting your artwork. Your responsibility includes providing accurate artwork and specifications.

The artwork will be printed on a white background. Artwork should be printed on the front side of the PCB. Artwork should be printed on the back side of the PCB.

---

 Imprint Colors:

 BLACK/BLACK, 100% Cu, 100% Ni  
 100% Au (optional)

 COBALT/BLACK, 100% Cu, 100% Ni  
 100% Au (optional)

 BLUE/BLACK, 100% Cu, 100% Ni  
 100% Au (optional)

### SINGLE SIDED HALF SIDEWALL

\*Always use the maximum 100% for the surface

Imprint Size: \_\_\_\_\_ Imprint Location: \_\_\_\_\_ Generation Type: \_\_\_\_\_

 Product Code: 5075-28 Product Color: \_\_\_\_\_ Quantity: \_\_\_\_\_

---

 Please be informed that all artwork submitted to us will be printed in color, your requested imprint color will be substituted as closely as possible, but not guaranteed. 100% color match.

For additional orders, there will be a charge to help placement with our technology/print capabilities. Your specifications, prints and drawings will not be returned.

The ability to print all color and graphics depends on color accuracy. Right, there is no guarantee that we will print the product information to match your specifications.

Imprint Colors:



**BLANK LABEL, TOP WALL ONLY**  
 (SEE 2D DRAWING)

**DOUBLE-SIDED, TOP & BOTTOM ONLY**  
 (SEE 2D DRAWING)

**SINGLE-SIDED, TOP & BOTTOM ONLY**  
 (SEE 2D DRAWING)

**SINGLE SIDED HALF SIDEWALL**

*(Always use top/bottom & bottom half side wall)*

Imprint Size: \_\_\_\_\_ Imprint Location: \_\_\_\_\_ Generation Type: \_\_\_\_\_

Product Code: **5075-28** Product Color: \_\_\_\_\_ Quantity: \_\_\_\_\_

Use this form to request a PCB artwork approval. We will do our best to meet your requested imprint size and the artwork is ready to print. For more information, visit [www.pcb.com](http://www.pcb.com).

For artwork orders, there will be a charge to help process your order and expedite your shipment. This charge is a one-time fee and is not applicable to repeat orders.

The quality of your artwork is important to us. We will do our best to meet your requested imprint size and the artwork is ready to print. For more information, visit [www.pcb.com](http://www.pcb.com).