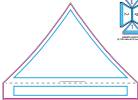


Imprint Colors:



REGIONS - COMMENTS
 ALL OTHERS ARE OK

REGIONS - COMMENTS
 ALL OTHERS ARE OK

REGIONS - COMMENTS
 ALL OTHERS ARE OK

REGIONS - COMMENTS
 ALL OTHERS ARE OK

TENT CUT

Always use the correct tent cut for the correct

Imprint Size: _____ Imprint Location: _____ Generation Type: _____

Product Code: 202501 Product Color: _____ Quantity: _____

The technical department of the manufacturer has reviewed the artwork and found it to be acceptable for production. The manufacturer is not responsible for any errors or omissions in the artwork.

The customer is responsible for all the artwork and any errors or omissions in the artwork. The manufacturer is not responsible for any errors or omissions in the artwork.

The customer is responsible for all the artwork and any errors or omissions in the artwork. The manufacturer is not responsible for any errors or omissions in the artwork.

Imprint Colors:



REGULATIONS - TOP PRINT COLORS
 All dimensions in millimeters

REGULATIONS - BOTTOM PRINT COLORS
 All dimensions in millimeters

TOP AND BOTTOM PRINTS - TOP COLORS
 All dimensions in millimeters

TOP AND BOTTOM PRINTS - BOTTOM COLORS
 All dimensions in millimeters

TENT CUT

All dimensions in millimeters. All items must be printed

Imprint Size: _____ Imprint Location: _____ Generation Type: _____

Product Code: **1000000** Product Color: _____ Quantity: _____

This is the artwork approval sheet for the artwork. It is not a contract. It is only a guide to the artwork. The artwork is not a contract. It is only a guide to the artwork. The artwork is not a contract. It is only a guide to the artwork.

The artwork is not a contract. It is only a guide to the artwork. The artwork is not a contract. It is only a guide to the artwork. The artwork is not a contract. It is only a guide to the artwork.

The artwork is not a contract. It is only a guide to the artwork. The artwork is not a contract. It is only a guide to the artwork. The artwork is not a contract. It is only a guide to the artwork.

 Imprint Colors:

FRONT



BLACK AREA - 100% COV
 100% COV COATED AREA

FRONT SIDE AREA - 100% COV
 100% COV COATED AREA

BACK AREA - 100% COV
 100% COV COATED AREA

SINGLE SIDED BACKMILL

Backmill that backmills 1 or both sides of the substrate

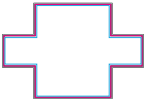
Imprint Size: _____ Imprint Location: _____ Generation Type: _____

Product Code: **247824** Product Color: _____ Quantity: _____

This is the responsibility of Substrate and their Supplier, we will do our best to assist you regarding imprint color and the artwork accuracy responsible for your production - 247824 product code

For substrate color, there will be colors to help placement with color management and registration. These specifications, colors and tolerances will be used for production.

The validity, we state, of any and all graphic information printed herein is void, if any, from the date the product is to be ordered to the product's release to the end user the distribution of information.

 Imprint Colors:


EMERSON THERMOCLOTH
 Emerson Thermocloth is a high-performance fabric designed for extreme heat protection.

EMERSON THERMOCLOTH
 Emerson Thermocloth is a high-performance fabric designed for extreme heat protection.

EMERSON THERMOCLOTH
 Emerson Thermocloth is a high-performance fabric designed for extreme heat protection.

BOX FIT THERMOCLOTH

Always use the correct size and type of fabric for the product.

Imprint Size: _____ Imprint Location: _____ Generation Type: _____

Product Code: **EMERSON** Product Color: _____ Quantity: _____

Use the information provided in this document to verify the accuracy of the artwork and to ensure that the product meets the required specifications. All product details are subject to change without notice.

For additional information, please contact your local distributor or visit our website at www.emerson.com. Your cooperation in this process is appreciated.

The company will not be held responsible for any damage or loss of data caused by the use of this software. The company will not be held responsible for any damage or loss of data caused by the use of this software.