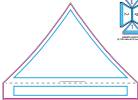


Imprint Colors:



IMPRINTS, COMPONENTS
AND OTHER INFORMATION

TENT KIT - TENTS KIT

TENT KIT - TENTS KIT

TENT KIT - TENTS KIT

TENT KIT

Always read the instructions before using the product.

Imprint Size: _____ Imprint Location: _____ Generation Type: _____

Product Code: **1000000** Product Color: _____ Quantity: _____

The technical specifications of the product are subject to change without notice. We do not assume any liability for errors or omissions in the technical specifications.

The warranty of the product is limited to the original purchaser. We do not assume any liability for damage to the product or for the loss of the product.

The warranty of the product is limited to the original purchaser. We do not assume any liability for damage to the product or for the loss of the product.

Imprint Colors:



REGISTRATION - 40% OFFER & 60% OFFER
 (Color calibration chart for printing)

REGISTRATION - 40% OFFER & 60% OFFER
 (Color calibration chart for printing)

TOP AND BOTTOM - 40% OFFER & 60% OFFER
 (Color calibration chart for printing)

TOP AND BOTTOM - 40% OFFER & 60% OFFER
 (Color calibration chart for printing)

TENT KIT

Always read the instructions on items that are subject

Imprint Size: _____ Imprint Location: _____ Registration Type: _____

Product Code: **1000000** Product Color: _____ Quantity: _____

Please do not remove any part of the artwork or the text from this sheet. If you do, you will be responsible for any errors and the cost of any reprinting. If you have any questions, please contact your account manager.

We warrant that the artwork and text on this sheet are correct as of the date of printing. We do not warrant that the artwork and text on this sheet are correct as of the date of printing. We do not warrant that the artwork and text on this sheet are correct as of the date of printing.

The artwork and text on this sheet are for informational purposes only. It is not intended to be used for any other purpose. We do not warrant that the artwork and text on this sheet are correct as of the date of printing. We do not warrant that the artwork and text on this sheet are correct as of the date of printing.

PO#: _____

ARTWORK APPROVAL SHEET

Imprint Colors: _____



FRONT PANEL - FRONT VIEW
ARTWORK APPROVAL SHEET

FRONT PANEL - FRONT VIEW
ARTWORK APPROVAL SHEET

BACK PANEL - FRONT VIEW
ARTWORK APPROVAL SHEET

SINGLE SIDED BACKWALL

Always use backboarded art for this view of the cabinet

Imprint Size: _____ Imprint Location: _____ Generation Type: _____

Product Code: **50750-01** Product Color: _____ Quantity: _____

As the authorized agent of Sublimation Solutions, we will do our best to meet your requested imprint colors and the artwork is nearly impossible to reproduce. ©2018 Sublimation Solutions

Our substrate colors may differ from the colors in digital proof and may vary with manufacturing/printing location. These specifications, methods and theories, without warranty, are provided.

The ability to print on any and all products depends on the printer, ink, and the quality of the product. We do not guarantee the quality of the product or the results of the printing process.

PO#: _____

ARTWORK APPROVAL SHEET

Imprint Colors: _____



STANDARD WALL - 10' HIGH X 10' WIDE
SEE WALL SPECIFICATIONS

STANDARD WALL - 10' HIGH X 8' WIDE
SEE WALL SPECIFICATIONS

STANDARD WALL - 10' HIGH X 6' WIDE
SEE WALL SPECIFICATIONS

SINGLE SIDED BACKWALL

Always use backdrops & screens that fit snugly.

Imprint Size: _____ Imprint Location: _____ Generation Type: _____

Product Code: **54758-01** Product Color: _____ Quantity: _____

As the authorized agent of Advertisers and their Brands, we will do our best to meet your requested imprint and wall size specifications to the extent reasonably possible. See wall specifications - 54758 product code.

As advertiser orders, there will be a charge to help placement with overnight print application. This specification includes wall hardware, with no other charges.

The ability to print on any wall height depends on where the wall is. If you have any questions, please contact the product manager to confirm the product information is correct under the current production circumstances.

Imprint Colors:



BLANK PCB - FRONT SIDE
 100% copper thickness

FRONT SIDE - 100% COPPER
 100% copper thickness

BACK SIDE - 100% COPPER
 100% copper thickness

SINGLE SIDED HALF SIDEWALL

Always use backsheet & silica mat to protect

Imprint Size: _____ Imprint Location: _____ Generation Type: _____

Product Code: **1000001** Product Color: _____ Quantity: _____

For the full terms and conditions of Submittals and their transfer, see all documents in order your requested request, also see the website for more complete information regarding PCB product lines.

For additional orders, there will be a charge to help placement with our manufacturing plant capabilities. These capabilities include and do not include additional cost associated.

The ability to create all your PCB artwork and designs is available across the globe, however, your artwork must be submitted to the product manufacturer to meet with the manufacturing capabilities.

Imprint Colors:



BLANK WALL - FULL WALL
SEE STANDARD WALL INFORMATION

DOUBLE WALL - FULL WALL
SEE STANDARD WALL INFORMATION

HAVE WALL - FULL WALL
SEE STANDARD WALL INFORMATION

SINGLE SIDED HALF SIDEWALL

Illustration Not To Scale. All Items Must Be Printed

Imprint Size: _____ Imprint Location: _____ Orientation Type: _____

Product Code: **54785-01** Product Color: _____ Quantity: _____

Use this artwork approval sheet to approve artwork for your product. We will do our best to meet your requested imprint size and the artwork is clearly legible for your product. **NO** product photo.

For additional orders, there will be a charge to help placement and artwork print application. This application is not a contract and does not constitute an offer.

The company will not be held responsible for any errors or omissions. Please contact your account manager for more information. The product information is provided under the standard business conditions.